



CIVIL | WATER | ENVIRONMENT

With you all the way.

PROPERTY DEVELOPMENT AND
FLOOD APPROVALS

COMPANY OVERVIEW

WMS Engineering is a specialist engineering consultancy firm providing high quality solutions to hydraulic design, water resources, stormwater and floodplain risk management problems. We are flexible, reliable and passionate about what we do. Our mission is to be the consultant of choice for the engineering solutions we offer and to continue building our portfolio of successful projects and satisfied clients

WITH YOU ALL THE WAY

As a team of stormwater and flood engineers, we are pleased to offer our assistance to streamline the preparation of Development Applications and State Significant Development Applications for a range of development types.

We have worked on a broad range of developments, from single dwellings to high density residential development and community infrastructure including aged care facilities, childcare facilities, hospitals and schools. We have a strong working knowledge of state and local government flood planning requirements, enabling us to swiftly identify the needs of each project to satisfy flooding requirements.

The WMS flood engineering team is able to provide the following services to assist in the preparation of Development Applications:

- Identification of applicable flood related development controls
- Preparation of design flood modelling and flood impact assessments
- Confirmation of Flood Planning Levels, and review of concept or detailed drawings for compliance
- Documentation to demonstrate compliance with state and local planning requirements
- Input to resolve design issues impacted by flooding
- Preparation of Flood Emergency Response Plans
- Preparation of Flood Evacuation Capability Assessments

WHY CHOOSE WMS?



We are design and approvals focused - we ensure all assessments are fit for purpose and not overcomplicated



We understand the stop-start nature of development projects, and we're with you every step of the way



We strive to build partnerships with companies in the land development sector, streamlining the delivery of services



With offices in Brisbane, Sydney and Melbourne, we are familiar with planning requirements and approvals processes across the eastern seaboard

TECHNICAL EXPERTISE

Our team has prepared numerous Development Applications and drawings for Construction across Queensland, New South Wales, and Victoria. We understand how consent authorities think and the language typically used, which positions us well to be able to efficiently respond to requests for further information or resolve design issues as we work through DA assessments.

WMS is well connected in the flooding industry and has worked with many Councils across Queensland, New South Wales and Victoria.

CONTACT US

BRISBANE

Blake Boulton

+61 413 790 406

Fortitude Valley QLD 4006

blake.boulton@wmseng.com.au

SYDNEY

Catherine Walker

+61 419 975 521

Marrickville NSW 2204

catherine.walker@wmseng.com.au

MELBOURNE

Jacqueline Woodlock

+61 438 780 049

Docklands VIC 3008

jacqueline.woodlock@wmseng.com.au

NORTH QUEENSLAND

Iain Brown

+61 408 014 631

Cairns QLD 4870

ian.brown@wmseng.com.au



www.wmseng.com.au



CIVIL | WATER | ENVIRONMENT

With you all the way.

COUNCIL DEVELOPMENT APPLICATIONS

WMS was engaged by Waverley Council to assist with a high volume of Development Applications and Construction Certificate drawings that required stormwater assessment. This secondment included reviewing stormwater plans for Development, the Application and Construction Certification.



“WMS have provided exceptional performance and service to our team. They have delivered consistent high quality work, process improvement for our internal team, filled gaps in our internal assessment process and been incredibly collaborative and easy to work with. Their attention to detail, time management and suitability of project personnel has been faultless. I would highly recommend WMS for Engineering and Civil Engineering Services based on our experiences with them over the past 12 months.”

ROBBIE FRAWLEY - Waverley Council

SSDA APPLICATIONS: HOSPITALS

WMS was engaged to provide a flood assessment for the proposed redevelopment of Greenwich Hospital. WMS assisted in the preparation of a State Significant Development Application (SSDA) that will propose the demolition of the existing Greenwich Hospital and the construction of a replacement hospital building complex, with integrated serviced seniors living buildings and a respite care facility.

AMBULANCE FLOOD REVIEW

WMS was engaged by NSW Health Infrastructure in collaboration with TSA Management to assist with the due diligence and acquisition of ambulance stations. WMS was directly involved in the investigation and subsequent development of recommendations to assist TSA in the due diligence and acquisition for ambulance stations.

“WMS have strong communication skills with a cooperative approach again supporting effective interaction with the project team. The WMS Engineering flood team delivered flood risk management strategies through a flexible approach with an emphasis on responding to the site and balancing the needs of the client.”

Alex Lisney, TSA MANAGEMENT



With you all the way.

ESTABLISHING A LONG TERM PARTNERSHIP

The WMS team has comprehensive knowledge of the time involved in each assessment, communication pathways, common issues or problems, and opportunities for improvements in efficiencies and processes. We look to develop a long term partnership with Council's across Australia, including:

- Development of a Service Level Agreement, involving commitment to availability and turnaround time to ensure a reliable service on an ad-hoc or continuous basis;
- Development of an ongoing contract to manage confidentiality requirements and avoid conflicts of interest;
- Identifying and implementing step-changes to improve efficiencies that build on Council's existing systems and skills. These would be sustainable improvements made on a needs-basis and not seek to start new systems from scratch or 'fix what isn't broken'.

RURAL DEVELOPEMTNS : CHESNEY FLOOD WORK

WMS was commissioned by SMK Consultants to undertake the coincident flood modelling and impact assessment of several unapproved levees which act to protect fields and infrastructure within the farm site of 'Chesney' to support a flood works application to WaterNSW.

The Application allowed for the approval for several levees which act to protect fields and infrastructure.

SCHOOLS:

WMS was commissioned by TSA Management for the provision of flood engineering services for Bede Polding Catholic College, specifically to provide design advice to allow the Schematic Design to be finalised and to assist TSA with the preparation of a Development Application.

KINGSTON CITY COUNCIL

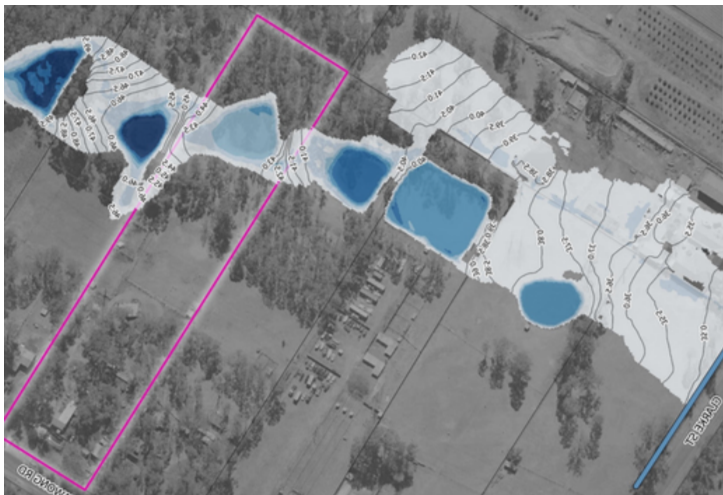
Jacqueline Woodlock was seconded to Kingston City Council to assist in the review and approval of stormwater drainage plans for both residential and commercial developments. Initially, Council did not have any quality analysis processes in place for reviewing the stormwater drainage plans, and no documentation to verify that a review had taken place. Jacqueline developed a QA system that reviewed the consultant's calculations, provided a checklist for the "issued for construction" plans and ensured drawings were both compliant with AS/NZS standards and Council standard drawings. This system improved response times, enhanced consistency of Council feedback, and reduced margin of error. This QA system was employed even after Jacqueline was no longer seconded to Council.

JACQUELINE WOODLOCK
Senior Engineer
WMS ENGINEERING



FLOOD EMERGENCY RESPONSE PLAN: MARSDEN ST

WMS was commissioned by Podia for our services in drafting an Flood Emergency Response Plan for the proposed development in Parramatta. The Flood Warning System and Flood Emergency Response Plan allowed for release of the Construction Certificate.



THORNLEIGH FLOOD ASSESSMENT

WMS was engaged by Mepstead & Associates to conduct a Flood Impact Assessment as the proposed development included the subdivision of the site into multiple allotments and the construction of a bridge across the existing watercourse that traverses the site. WMS was able to represent the post-development conditions and provide preliminary recommendations for the construction of an access bridge over the existing watercourse; as well as provide high level advice for potential mitigation options if the proposed works adversely impact flood behaviour elsewhere.

Ed Henty | Director, Dryside Engineering

Projects ebb and flow as they progress and an ability to ask for little add-ons here and there, and for them to be done without fanfare and quickly, really assists in delivering a quality and timely outcome for our clients.

DA ASSISTANCE: PARADE STREETScape

WMS assisted in the Parade Streetscape Development Application in conjunction with Dryside Engineering for the City of Norwood to ascertain flood risk and assess a number of climate change scenarios.

